

Constable GD in CAPFs and SSF Rifleman GD in AR and Sepoy in NCB Examination 2025

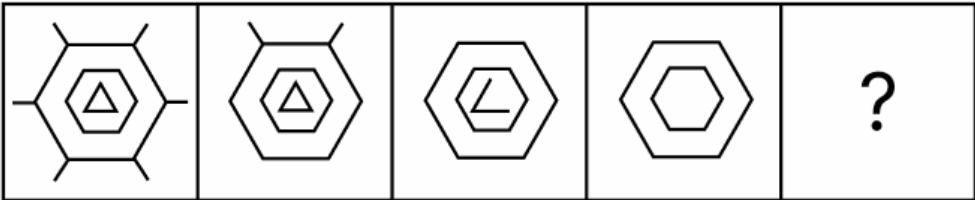
Exam Date	04/02/2025
Exam Time	12:00 PM - 1:00 PM
Subject	Constable GD Examination 2025

Section : Part-A-General Intelligence and Reasoning

Q.1 Three of the following four letter-clusters are alike in a certain way and thus form a group. Which is the letter-cluster that does NOT belong to that group?
(Note: The odd one out is not based on the number of consonants/vowels or their positions in the letter-cluster.)

- Ans
- ☒ 1. PTV
 - ☒ 2. CGI
 - ☒ 3. EIK
 - ☒ 4. GLM

Q.2 Identify the figure given in the options which when put in place of the question mark (?) will logically complete the series.

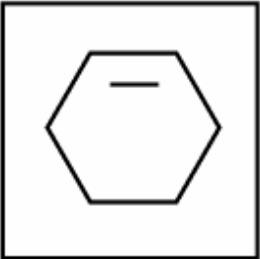


Ans

☒ 1.



☒ 2.



☒ 3.



☒ 4.



Q.3 REMY is related to VHOZ in a certain way based on the English alphabetical order. In the same way, ZFHU is related to DIJV. To which of the given options is LBSO related, following the same logic?

- Ans**
- ☒ 1. QDWR
 - ☒ 2. OFVQ
 - ☒ 3. PEUP
 - ☒ 4. RDWP

Q.4 Read the given statements and conclusions carefully. Assuming that the information given in the statements is true, even if it appears to be at variance with commonly known facts, decide which of the given conclusions logically follow(s) from the statements.

Statements:
All wires are cables.
All wires are ropes.
Some ropes are steels.

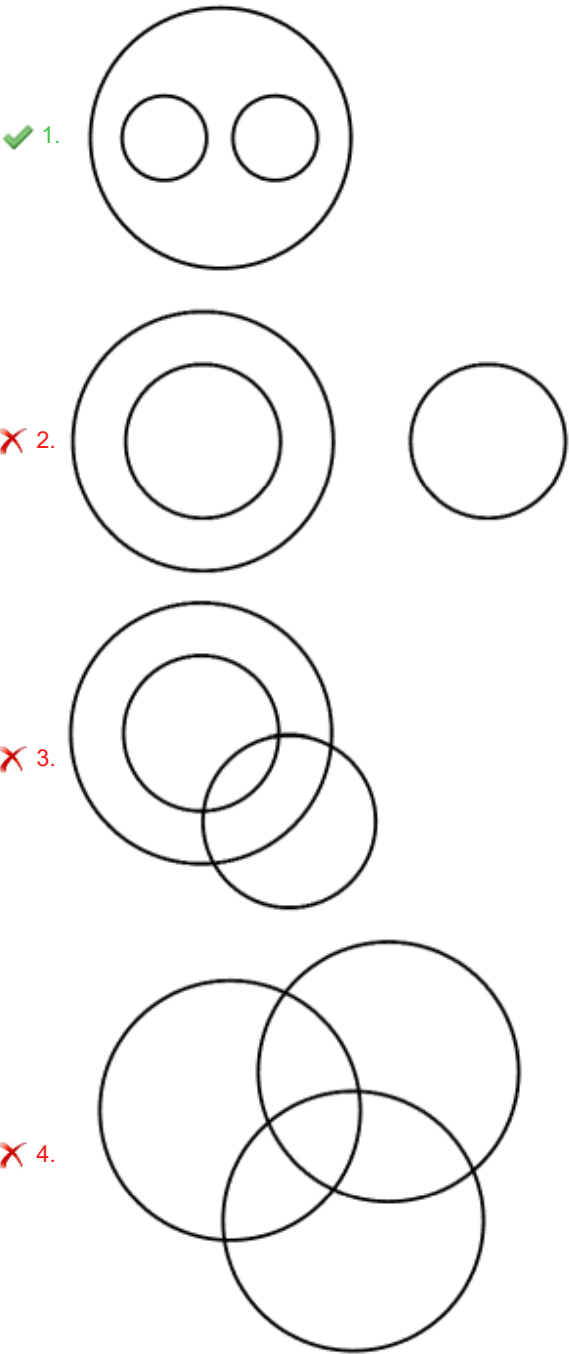
Conclusions
(I) Some steels are wires.
(II) Some ropes are cables.

- Ans**
- ☒ 1. Only conclusion (I) follows
 - ☒ 2. Only conclusion (II) follows
 - ☒ 3. Neither conclusion (I) nor (II) follows
 - ☒ 4. Both conclusions (I) and (II) follow

Q.5 Select the Venn diagram that best illustrates the relationship between the following classes.

Transport, Bus, Airplane

Ans



Q.6 In a certain code language 'PGMS' is coded as '9-18-12-6' and 'TBRX' is coded as '5-23-7-1'. What is the code for 'KAVO' in the given language?

- Ans
- 1. 14-24-3-10
 - 2. 13-25-6-12
 - 3. 11-21-2-9
 - 4. 15-26-4-11

Q.7 In a certain code language,
'A + B' means 'A is the sister of B',
'A - B' means 'A is the father of B',
'A x B' means 'A is the brother of B' and
'A ÷ B' means 'A is the mother of B'.

How is A related to D if 'A ÷ B + C x D - E'?

- Ans** ☒ 1. Sister's daughter
☒ 2. Mother
☒ 3. Father's mother
☒ 4. Daughter's sister

Q.8 What will come in the place of the question mark (?) in the following equation, if '+' and '-' are interchanged and 'x' and '÷' are interchanged?

18 ÷ 5 + 26 - 45 x 5 = ?

- Ans** ☒ 1. 75
☒ 2. 73
☒ 3. 80
☒ 4. 68

Q.9 What should come in place of the question mark (?) in the given series?

79 72 58 37 9 ?

- Ans** ☒ 1. -26
☒ 2. -24
☒ 3. -27
☒ 4. -25

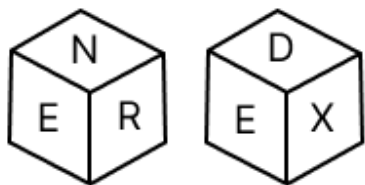
Q.10 In a certain code language, 'TEDI' is coded as '11' and 'SUCBVO' is coded as '13'. How is 'YXJIAZL' coded in the given language?

- Ans** ☒ 1. 9
☒ 2. 10
☒ 3. 14
☒ 4. 12

Q.11 Eight people are sitting in two parallel rows containing 4 people each, in such a way that there is equal distance between adjacent persons.
In row 1 – I, N, K and S are seated and all of them are facing south
In row 2 – P, A, R and T are seated and all of them are facing north.
Thus, each person faces another person from the other row.
R sits to the immediate right of A. Only two people sit between K and S. A faces K. The one who faces N, sits to the immediate left of P. T doesn't sit at any of the extreme ends.
Which of the following options represents both people facing each other?

- Ans** ☒ 1. I and R
☒ 2. N and P
☒ 3. S and R
☒ 4. K and T

Q.12 A dice has its faces marked by letters D, X, A, N, R and E. Two positions of the same dice are given below. Which face is opposite to face A?



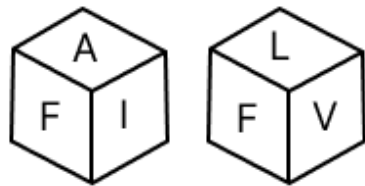
- Ans
- ☐ 1. R
 - ☐ 2. D
 - ☒ 3. E
 - ☐ 4. N

Q.13 What should come in place of the question mark (?) in the given series based on the English alphabetical order?

WUY KIM YWA MKO ?

- Ans
- ☐ 1. CYC
 - ☐ 2. ZYC
 - ☒ 3. AYC
 - ☐ 4. BYC

Q.14 A dice has its faces marked by letters I, L, O, V, A and F. Two positions of the same dice are given below. Which face is opposite to face O?



- Ans
- ☐ 1. A
 - ☒ 2. F
 - ☐ 3. L
 - ☐ 4. V

Q.15 What should come in place of the question mark (?) in the given series?

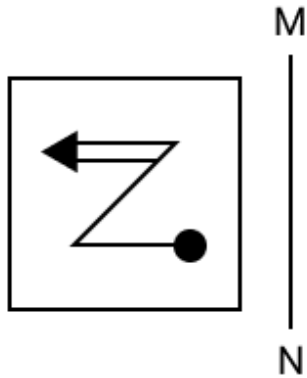
14 23 42 71 110 ?

- Ans
- ☐ 1. 180
 - ☐ 2. 164
 - ☐ 3. 172
 - ☒ 4. 159

Q.16 Seven people P, Q, R, S, T, U and V are sitting in a straight line facing the north (but not necessarily in the same order). V is sitting to the immediate right of Q and the immediate left of R. P is sitting to the immediate right of R and the immediate left of S. U is sitting second to the right of S. U is sitting at one of the ends of the line. Who is sitting between S and U?

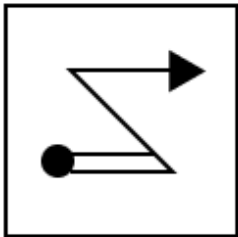
- Ans
- ☒ 1. T
 - ☐ 2. P
 - ☐ 3. V
 - ☐ 4. R

Q.17 Select the correct mirror image of the given figure when the mirror is placed at MN as shown below.

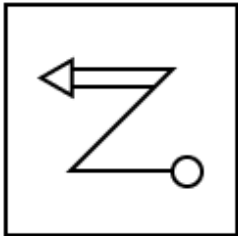


Ans

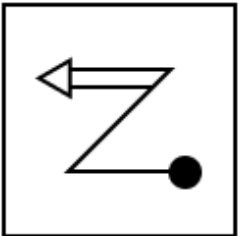
✗ 1.



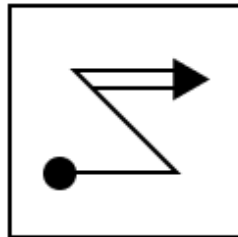
✗ 2.



✗ 3.



✓ 4.



Q.18 Select the option that represents the letters that, when sequentially placed from left to right in the blanks below, will complete the letter series.
_ K _ U T O _ L _ T O _ _ U T O K L _ _

Ans ✗ 1. OKLUKULT

✓ 2. OLKUKLUT

✗ 3. OLKUKUTL

✗ 4. LOKUKTUL

Q.19 The position(s) of how many letters will remain unchanged if each letter in the word JOSTLED is arranged in the English alphabetical order?

Ans ✗ 1. 2

✗ 2. 3

✓ 3. 0

✗ 4. 1

Q.20 PSPN is related to OROM in a certain way based on the English alphabetical order. In the same way, YBYW is related to XAXV. To which of the given options is QTQO related, following the same logic?

- Ans**
- ☐ 1. PRON
 - ☐ 2. PSON
 - ☐ 3. PTOQ
 - ☒ 4. PSPN

Section : **Part-B-General Knowledge and General awareness**

Q.1 Who was the British Prime Minister when India gained independence in 1947?

- Ans**
- ☐ 1. Ramsay MacDonald
 - ☐ 2. Anthony Eden
 - ☒ 3. Clement Attlee
 - ☐ 4. Winston Churchill

Q.2 Which Five-Year Plan was the first to be terminated before its completion, and why?

- Ans**
- ☐ 1. Seventh Plan, due to political conflicts
 - ☐ 2. Third Plan, due to natural disasters
 - ☒ 3. Fifth Plan, due to a change in government
 - ☐ 4. Second Plan, due to economic instability

Q.3 Which chemical is used for whitening (or removal of colours) of cloth in cloth industries?

- Ans**
- ☒ 1. Calcium oxychloride
 - ☐ 2. Sodium hydrogencarbonate
 - ☐ 3. Calcium chloride
 - ☐ 4. Sodium carbonate

Q.4 According to the National Multidimensional Poverty Index 2023, which of the following states showed the fastest poverty reduction?

- Ans**
- ☐ 1. Karnataka
 - ☐ 2. Haryana
 - ☒ 3. Uttar Pradesh
 - ☐ 4. Manipur

Q.5 What was a key focus of the First Five Year Plan (1951-1956)?

- Ans**
- ☒ 1. Agricultural development
 - ☐ 2. Privatisation of industries
 - ☐ 3. Rapid industrialisation
 - ☐ 4. Development of heavy industries

Q.6 Who among the following was the first music director to bring Rock 'n' Roll to Hindi tunes?

- Ans**
- ☐ 1. Zakir Hussain
 - ☐ 2. Hariprasad Chaurasia
 - ☒ 3. Rahul Dev Burman
 - ☐ 4. Ravi Shankar

Q.7	Which of the following goals of the Five-Year Plan is directly related to the people?
Ans	<div><div><div>✖</div><div>1. Self-reliance</div></div><div><div>✖</div><div>2. Growth</div></div><div><div>✖</div><div>3. Modernisation</div></div><div><div>✔</div><div>4. Equity</div></div></div>
Q.8	In June 2024, who resigned from their Wayanad Lok Sabha seat?
Ans	<div><div><div>✔</div><div>1. Rahul Gandhi</div></div><div><div>✖</div><div>2. Priyanka Gandhi Vadra</div></div><div><div>✖</div><div>3. Sonia Gandhi</div></div><div><div>✖</div><div>4. Mallikarjun Kharge</div></div></div>
Q.9	Nilgiri is one of the oldest mountain ranges, located at the tri-junction of which three states?
Ans	<div><div><div>✖</div><div>1. Northern UP, Uttarakhand, Himachal Pradesh</div></div><div><div>✖</div><div>2. Assam, Nagaland, Tripura</div></div><div><div>✖</div><div>3. Gujarat, Rajasthan, Haryana</div></div><div><div>✔</div><div>4. Tamil Nadu, Kerala, Karnataka</div></div></div>
Q.10	In which state is the festival of ‘Kalinga Mahotsav ’celebrated?
Ans	<div><div><div>✖</div><div>1. Karnataka</div></div><div><div>✖</div><div>2. Maharashtra</div></div><div><div>✔</div><div>3. Odisha</div></div><div><div>✖</div><div>4. Assam</div></div></div>
Q.11	Which of the given colours in NOT associated with the judo grades?
Ans	<div><div><div>✔</div><div>1. Pink</div></div><div><div>✖</div><div>2. Red</div></div><div><div>✖</div><div>3. Blue</div></div><div><div>✖</div><div>4. White</div></div></div>
Q.12	What is the atomic number of Lawrencium, a chemical element that is classified as the last member of the actinides?
Ans	<div><div><div>✖</div><div>1. 101</div></div><div><div>✖</div><div>2. 99</div></div><div><div>✖</div><div>3. 108</div></div><div><div>✔</div><div>4. 103</div></div></div>
Q.13	Rani Machaiah is an Ummathat folk dancer from _____ who received Padma Shri 2023 in the field of Art (Folk Dance).
Ans	<div><div><div>✖</div><div>1. Kerala</div></div><div><div>✔</div><div>2. Karnataka</div></div><div><div>✖</div><div>3. Telangana</div></div><div><div>✖</div><div>4. Goa</div></div></div>
Q.14	Which of the following rights is considered a component of the Right to Life and Personal Liberty?
Ans	<div><div><div>✖</div><div>1. Right to Freedom of Speech</div></div><div><div>✖</div><div>2. Right to Equality</div></div><div><div>✖</div><div>3. Right to Property</div></div><div><div>✔</div><div>4. Right to Privacy</div></div></div>

Q.15 Which of the following Vedas is primarily the collection of magic spells and charms to ward off evil spirits and diseases?

- Ans**
- ☒ 1. Samaveda
 - ☒ 2. Atharvaveda
 - ☒ 3. Rigveda
 - ☒ 4. Yajurveda

Q.16 With which sport is the Indian Para Athlete Parul Parmar associated?

- Ans**
- ☒ 1. Athletics
 - ☒ 2. Shooting
 - ☒ 3. Badminton
 - ☒ 4. Swimming

Q.17 The Constitution (Scheduled Castes and Scheduled Tribes) Orders (Amendment) Bill, 2024 intends to modify the list of Scheduled Castes and Scheduled Tribes in which of the following Indian states?

- Ans**
- ☒ 1. Rajasthan
 - ☒ 2. Uttar Pradesh
 - ☒ 3. Maharashtra
 - ☒ 4. Odisha

Q.18 Who among the following has the power to dissolve the legislative assembly of a state?

- Ans**
- ☒ 1. Chief Justice of High Court
 - ☒ 2. Chief Minister of the State
 - ☒ 3. Chief Secretary of the State
 - ☒ 4. Governor of the State

Q.19 Padma Shri awardee Shovana Narayan is associated with which Indian classical dance form?

- Ans**
- ☒ 1. Manipuri
 - ☒ 2. Bharatanatyam
 - ☒ 3. Kathak
 - ☒ 4. Odissi

Q.20 Which of the following is the state religion of Bangladesh, as per the Constitution of Bangladesh?

- Ans**
- ☒ 1. Christianity
 - ☒ 2. Islam
 - ☒ 3. Buddhism
 - ☒ 4. Hinduism

Section : Part-C-Elementary Mathematics

Q.1 Evaluate: $(-9) - (-60) \div (-12) + (-3) \times 9$

- Ans**
- ☒ 1. -40
 - ☒ 2. -44
 - ☒ 3. -41
 - ☒ 4. -43

Q.2 Sarang invested some money in HDFC at 4% per annum rate of interest. What would be the corresponding simple interest (in ₹) if after 2 years, Sarang got ₹153 as compound interest, considering annual compounding?

- Ans**
- ☐ 1. 145
 - ☐ 2. 160
 - ☒ 3. 150
 - ☐ 4. 165

Q.3 Find the value of $\left[(84 \div 6) \times \left\{ \frac{91}{7} + \frac{16}{2} \times (8 - 6) \right\} \right]$

- Ans**
- ☐ 1. 409
 - ☐ 2. 426
 - ☐ 3. 400
 - ☒ 4. 406

Q.4 Amit invests a sum of ₹5400 and Gopal invests a sum of ₹9400 at the same rate of simple interest per annum. If, at the end of 4 years, Gopal gets ₹480 more interest than Amit, then find the rate of interest per annum (in percentage).

- Ans**
- ☐ 1. 5
 - ☒ 2. 3
 - ☐ 3. 2
 - ☐ 4. 4

Q.5 Rajeshwar can do a piece of work in 12 days, Vikram in 6 days and Tiger in 15 days. They all start the work together, but Rajeshwar leaves after 2 days and Vikram leaves 3 days before the work is completed. In how many days is the work completed?

- Ans**
- ☐ 1. $5\frac{3}{7}$
 - ☐ 2. $5\frac{4}{7}$
 - ☒ 3. $5\frac{5}{7}$
 - ☐ 4. $5\frac{6}{7}$

Q.6 A candidate scores 25% marks and fails by 68 marks, while another candidate, who scores 50% marks, gets 42 marks more than the minimum required marks to pass the examination. Find the maximum marks for the examination.

- Ans**
- ☐ 1. 410
 - ☒ 2. 440
 - ☐ 3. 430
 - ☐ 4. 400

Q.7 A shopkeeper bought an article for ₹520. At what price (in ₹) should he sell the article to make 10% profit?

- Ans**
- ☐ 1. 560
 - ☒ 2. 572
 - ☐ 3. 468
 - ☐ 4. 584

Q.8	A shopkeeper has one spherical laddoo of radius 7 cm. With the same material, how many laddoos of radius 3.5 cm can be made?
Ans	<div><div><div>✖</div><div>1. 12</div></div><div><div>✖</div><div>2. 4</div></div><div><div>✔</div><div>3. 8</div></div><div><div>✖</div><div>4. 6</div></div></div>
Q.9	A customer could not decide between a discount of 40% or two successive discounts of 25% and 15% to buy a certain article. What is the difference between both the discounts?
Ans	<div><div><div>✖</div><div>1. 3.25%</div></div><div><div>✖</div><div>2. 2.75%</div></div><div><div>✖</div><div>3. 2.25%</div></div><div><div>✔</div><div>4. 3.75%</div></div></div>
Q.10	Rachin travels a distance at 60 km/hr for 2 hours and 80 km at 40 km/hr. Find the average speed of Rachin (in km/hr).
Ans	<div><div><div>✖</div><div>1. 55</div></div><div><div>✖</div><div>2. 59</div></div><div><div>✖</div><div>3. 47</div></div><div><div>✔</div><div>4. 50</div></div></div>
Q.11	A dishonest shopkeeper promises to sell his goods at cost price. However, he uses a weight that actually weighs 26% less than what is written on it. Find his profit percentage.
Ans	<div><div><div>✖</div><div>1. $37\frac{10}{37}\%$</div></div><div><div>✖</div><div>2. $34\frac{5}{37}\%$</div></div><div><div>✔</div><div>3. $35\frac{5}{37}\%$</div></div><div><div>✖</div><div>4. $36\frac{6}{37}\%$</div></div></div>
Q.12	The LCM of 672 and 7056 is ____.
Ans	<div><div><div>✔</div><div>1. 14112</div></div><div><div>✖</div><div>2. 42336</div></div><div><div>✖</div><div>3. 28224</div></div><div><div>✖</div><div>4. 7056</div></div></div>
Q.13	Nitin has ₹1617 with him. He divided it amongst his sons Pravin and Rishi and asked them to invest it at 10% rate of interest compounded annually. It was seen that Pravin and Rishi got same amount after 17 and 18 years respectively. How much (in ₹) did Nitin give to Pravin?
Ans	<div><div><div>✖</div><div>1. 697</div></div><div><div>✖</div><div>2. 870</div></div><div><div>✖</div><div>3. 770</div></div><div><div>✔</div><div>4. 847</div></div></div>

Q.14 Two trains are moving in opposite directions at speeds of 60 km/h and 110 km/h. The length of one train is 360 m. The time taken by them to cross each other is 21 seconds. The length (in m) of the other train, correct to 2 decimal places, is:

- Ans**
- ☒ 1. 632.93
 - ☒ 2. 631.66
 - ☒ 3. 630.92
 - ☒ 4. 630.08

Q.15 The price (per litre) of petrol increases by 60%. By what percent should its consumption be reduced such that the expenditure on it increases by 12% only?

- Ans**
- ☒ 1. 70%
 - ☒ 2. 66%
 - ☒ 3. 30%
 - ☒ 4. 36%

Q.16 The average age of 48 students of a class is 22 years. If the age of the teacher is also included, the average age of the whole group becomes 23 years. The age (in years) of the teacher is:

- Ans**
- ☒ 1. 60
 - ☒ 2. 71
 - ☒ 3. 68
 - ☒ 4. 70

Q.17 A fort had provision of food for 150 men for 85 days. After 15 days, 25 men left the fort. Find the number of days for which the remaining food will last.

- Ans**
- ☒ 1. 88
 - ☒ 2. 84
 - ☒ 3. 80
 - ☒ 4. 82

Q.18 Evaluate: $16 + 10 \div 5 - 2 \times 3$

- Ans**
- ☒ 1. 14
 - ☒ 2. 15
 - ☒ 3. 12
 - ☒ 4. 11

Q.19 Two trains, each 180 m long, are moving towards each other on parallel tracks at speeds of 50 km/hr and 70 km/hr. In how many seconds will they completely cross each other?

- Ans**
- ☒ 1. 10.4
 - ☒ 2. 10.8
 - ☒ 3. 10.2
 - ☒ 4. 10.6

Q.20 If $7A = 6B = 12C$, what is $A : B : C$?

- Ans**
- ☒ 1. 7 : 12 : 14
 - ☒ 2. 12 : 14 : 7
 - ☒ 3. 12 : 7 : 14
 - ☒ 4. 14 : 12 : 7

Q.1 Select the most appropriate option that can substitute the underlined segment in the given sentence. If there is no need to substitute, select 'No substitution required'

All criminal tendencies must be nipped on the bud during childhood.

- Ans
- ✓ 1. nipped in the bud
 - ✗ 2. No substitution required
 - ✗ 3. nipped at the bud
 - ✗ 4. nipped off the bud

Q.2 Select the most appropriate option to substitute the underlined segment in the given sentence.

He enjoy going in a jog in the morning to start his day on a healthy note.

- Ans
- ✗ 1. has been enjoyed go in the jog
 - ✓ 2. enjoys going for a jog
 - ✗ 3. is enjoy going at a jog
 - ✗ 4. will enjoy going to a jog

Q.3 Identify the INCORRECTLY spelt word in the given sentence.

The chef used a special recepie for the gourmet dish.

- Ans
- ✗ 1. Gourmet
 - ✗ 2. Special
 - ✓ 3. Recepie
 - ✗ 4. Chef

Q.4 Select the most appropriate meaning of the underlined idiom.

He suddenly tried to throw cold water on my plans.

- Ans
- ✓ 1. To discourage
 - ✗ 2. To take revenge
 - ✗ 3. To understand the hidden meaning
 - ✗ 4. To seize the opportunity

Q.5 Parts of the following sentence have been given as options. Select the option that contains an error.

The experimental chef combined flavours audacious and with an almost synesthetic sensibility, creating dishes that challenged the very notion of culinary categories.

- Ans
- ✗ 1. culinary categories
 - ✓ 2. combined flavours audacious
 - ✗ 3. experimental chef
 - ✗ 4. almost synesthetic sensibility

Q.6	Select the most appropriate meaning of the given word. Dilemma
Ans	<div><div><div>✖</div><div>1. Worn</div></div><div><div>✖</div><div>2. Situation</div></div><div><div>✔</div><div>3. Plight</div></div><div><div>✖</div><div>4. Portion</div></div></div>
Q.7	Select the option that best defines the given word. Banish
Ans	<div><div><div>✖</div><div>1. To determine</div></div><div><div>✖</div><div>2. To harm</div></div><div><div>✔</div><div>3. To relegate</div></div><div><div>✖</div><div>4. To evaluate</div></div></div>
Q.8	Select the most appropriate ANTONYM of the given word. Dainty
Ans	<div><div><div>✖</div><div>1. Timid</div></div><div><div>✖</div><div>2. Demanding</div></div><div><div>✖</div><div>3. Critical</div></div><div><div>✔</div><div>4. Inelegant</div></div></div>
Q.9	The given sentence is divided into four segments. Select the option that has the segment with an adverbial usage error. Jackson told Aria, "Generally, I am grateful for your help."
Ans	<div><div><div>✖</div><div>1. Jackson told Aria,</div></div><div><div>✔</div><div>2. "Generally, I am</div></div><div><div>✖</div><div>3. your help."</div></div><div><div>✖</div><div>4. grateful for</div></div></div>
Q.10	Select the word segment that can substitute the bracketed word segment correctly and complete the sentence. Select 'No correction required' if the given segment is correct. (Did she gave) her business card to the clients at the party last night?
Ans	<div><div><div>✖</div><div>1. Does she gave her business card to the clients at the party last night?</div></div><div><div>✔</div><div>2. Did she give her business card to the clients at the party last night?</div></div><div><div>✖</div><div>3. No correction required</div></div><div><div>✖</div><div>4. Did she given her business card to the clients at the party last night?</div></div></div>
Q.11	Select the option that rectifies the spelling error in the given sentence. He was determined to acomplish his goals.
Ans	<div><div><div>✔</div><div>1. accomplish</div></div><div><div>✖</div><div>2. determened</div></div><div><div>✖</div><div>3. accompalish</div></div><div><div>✖</div><div>4. detarmined</div></div></div>

Q.12 Select the most appropriate synonym of the given word.

Petite

- Ans**
- ☒ 1. Fit
 - ☒ 2. Best
 - ☒ 3. Small
 - ☒ 4. Flexible

Q.13 Select the most appropriate option to fill in the blank.

Ram dropped the glass and it shattered on the floor. 'Drop' here means _____.

- Ans**
- ☒ 1. stopped
 - ☒ 2. pay a casual visit
 - ☒ 3. an ascent
 - ☒ 4. fall or let fall

Q.14 Select the word that best completes the given sentence. Determine the collocation through the sentence.

Marz would describe it in _____ detail.

- Ans**
- ☒ 1. elaborate
 - ☒ 2. big
 - ☒ 3. great
 - ☒ 4. good

Q.15 Select the most appropriate option to substitute the underlined segment in the given sentence.

The article that you have submitted isn't make sense to me.

- Ans**
- ☒ 1. does it make sense
 - ☒ 2. doesn't it make sense
 - ☒ 3. doesn't make sense
 - ☒ 4. is it making sense

Comprehension:

In the following passage, some words have been deleted. Read the passage carefully and select the most appropriate option to fill in each blank.

Adopting sustainable practices in daily life (1) _____ to environmental conservation. Small actions, (2) _____ reducing single-use plastics, conserving energy, planting trees, using water sparingly and reducing the use of electronic gadgets, (3) _____ make a significant impact. Research shows that communities (4) _____ sustainable living not only reduce their carbon footprint but also create a healthier environment (5) _____ future generations.

SubQuestion No : 16

Q.16 Select the most appropriate option to fill in blank number 1.

- Ans**
- ☒ 1. sacrifice
 - ☒ 2. supplies
 - ☒ 3. addition
 - ☒ 4. contribute

Comprehension:

In the following passage, some words have been deleted. Read the passage carefully and select the most appropriate option to fill in each blank.

Adopting sustainable practices in daily life (1) _____ to environmental conservation. Small actions, (2) _____ reducing single-use plastics, conserving energy, planting trees, using water sparingly and reducing the use of electronic gadgets, (3) _____ make a significant impact. Research shows that communities (4) _____ sustainable living not only reduce their carbon footprint but also create a healthier environment (5) _____ future generations.

SubQuestion No : 17

Q.17 Select the most appropriate option to fill in blank number 2.

- Ans**
- ☒ 1. likes
 - ☒ 2. dislike
 - ☒ 3. instance
 - ☒ 4. such as

Comprehension:

In the following passage, some words have been deleted. Read the passage carefully and select the most appropriate option to fill in each blank.

Adopting sustainable practices in daily life (1) _____ to environmental conservation. Small actions, (2) _____ reducing single-use plastics, conserving energy, planting trees, using water sparingly and reducing the use of electronic gadgets, (3) _____ make a significant impact. Research shows that communities (4) _____ sustainable living not only reduce their carbon footprint but also create a healthier environment (5) _____ future generations.

SubQuestion No : 18

Q.18 Select the most appropriate option to fill in blank number 3.

- Ans**
- ☒ 1. sparingly
 - ☒ 2. frequently
 - ☒ 3. additionally
 - ☒ 4. collectively

Comprehension:

In the following passage, some words have been deleted. Read the passage carefully and select the most appropriate option to fill in each blank.

Adopting sustainable practices in daily life (1) _____ to environmental conservation. Small actions, (2) _____ reducing single-use plastics, conserving energy, planting trees, using water sparingly and reducing the use of electronic gadgets, (3) _____ make a significant impact. Research shows that communities (4) _____ sustainable living not only reduce their carbon footprint but also create a healthier environment (5) _____ future generations.

SubQuestion No : 19

Q.19 Select the most appropriate option to fill in blank number 4.

- Ans**
- ☒ 1. enfold
 - ☒ 2. clutch
 - ☒ 3. squeeze
 - ☒ 4. embracing

Comprehension:

In the following passage, some words have been deleted. Read the passage carefully and select the most appropriate option to fill in each blank.

Adopting sustainable practices in daily life (1) _____ to environmental conservation. Small actions, (2) _____ reducing single-use plastics, conserving energy, planting trees, using water sparingly and reducing the use of electronic gadgets, (3) _____ make a significant impact. Research shows that communities (4) _____ sustainable living not only reduce their carbon footprint but also create a healthier environment (5) _____ future generations.

SubQuestion No : 20

Q.20 Select the most appropriate option to fill in blank number 5.

- Ans**
- ☒ 1. towards
 - ☒ 2. of
 - ☒ 3. against
 - ☒ 4. for

Q.1 'सत्कार' का विलोम शब्द है-

- Ans
- ☒ 1. परमार्थ
 - ☒ 2. तिरस्कार
 - ☒ 3. आतिथ्य
 - ☒ 4. पुरस्कार

Q.2 'रसोइये ने आज _____।' उपयुक्त विदेशज शब्द से वाक्य पूर्ण करें -

- Ans
- ☒ 1. रोटी नहीं बनायी
 - ☒ 2. आटा नहीं गुँधा
 - ☒ 3. सूप नहीं बनाया
 - ☒ 4. रसोई नहीं बनायी

Q.3 'पड़ोसी देश में भूकंप और सूनामी से भारी क्षति हुई।' उपरोक्त अशुद्ध वाक्य के शुद्ध रूप का चयन करें-

- Ans
- ☒ 1. पड़ोसी देश में भूकंप और सुनामी से भारी क्षति हुई
 - ☒ 2. पड़ोसी देश में भूकंप और सूनामी से भारी क्षति हुई
 - ☒ 3. पड़ोसी देश में भूकंप और सूनामी से भारी क्षती हुई
 - ☒ 4. पड़ोसी देश में भूकंप और सुनामी से भारी क्षती हुई

Q.4 रेखांकित शब्द के विलोम से दिया गया वाक्य पूर्ण करें-

सृष्टि का आरंभ ईश्वर से है तो _____ भी उसी की इच्छा से होगी।

- Ans
- ☒ 1. निर्माण
 - ☒ 2. प्रलय
 - ☒ 3. ध्वंस
 - ☒ 4. विनाश

Q.5 निम्नलिखित वाक्यांश के लिए सार्थक शब्द चुनिए -
बढ़ा-चढ़ाकर कही गयी बात

- Ans
- ☒ 1. अन्योक्ति
 - ☒ 2. अनाशयोक्ति
 - ☒ 3. अतिशयोक्ति
 - ☒ 4. उपयुक्ति

Q.6 निम्नलिखित वाक्य में वर्तनी संबंधी त्रुटि की पहचान करें।

ज्योति लंबी समय पश्चात अपने गाँव वापस लौटी थी।

- Ans
- ☒ 1. ज्योति
 - ☒ 2. गाँव
 - ☒ 3. लंबी
 - ☒ 4. पश्चात

Q.7 निम्नलिखित में से 'दुराग्रह' के लिए विलोम शब्द है-

- Ans
- ☒ 1. अवसान
 - ☒ 2. अवस्था
 - ☒ 3. आरंभ
 - ☒ 4. आग्रह

Q.8 दिए गए शब्द का उचित विलोम शब्द चुनिए-

उन्नत

- Ans
- ☒ 1. पतन
 - ☒ 2. सवनत
 - ☒ 3. अवनत
 - ☒ 4. उन्नति

Q.9 निम्नलिखित वाक्यांश के लिए सार्थक शब्द चुनिए-
जिसका कोई अंग भंग हो

- Ans
- ☒ 1. अपाहिज
 - ☒ 2. भुजाहीन
 - ☒ 3. षडंग
 - ☒ 4. चौपाया

Q.10 कौन – सा तत्सम शब्द निम्न वाक्य के लिए उपयुक्त होगा ? चयन करके वाक्य पूर्ण कीजिए।
आप पहले _____ का मेल करें ; फिर आगे बढ़िए।

- Ans
- ☒ 1. मंडली
 - ☒ 2. निवृत्ति
 - ☒ 3. कौमुदी
 - ☒ 4. कुंडली

Q.11 निम्नलिखित में से कौन-सा वाक्य सकर्मक क्रिया की दृष्टि से अशुद्ध है?

- Ans
- ☒ 1. शीला पत्र लिखती है
 - ☒ 2. मोहन रोटी खाता है
 - ☒ 3. उपासना दूध पीती है
 - ☒ 4. राम बहुत रोता है

Q.12 'कहाँ राजा भोज, नहीं गंगू तेली।' वाक्य शुद्धि हेतु रेखांकित स्थान पर उचित क्रिया विशेषण होगा -

- Ans
- ☒ 1. कहीं
 - ☒ 2. तो
 - ☒ 3. इसलिए
 - ☒ 4. कहाँ

Q.13 'उल्लू सीधा करना' मुहावरे का उपयुक्त अर्थ क्या है?

- Ans
- ☒ 1. अपना काम निकालना
 - ☒ 2. उल्लू पालना
 - ☒ 3. भयभीत करना
 - ☒ 4. खुशामद करना

Q.14 निम्नलिखित वाक्य में रेखांकित पद के बदले कौन सा विकल्प उपयुक्त होगा?
बूढ़ी काकी जूठी पत्तलों को खाने लगी।

- Ans
- ☒ 1. देखने
 - ☒ 2. चाटने
 - ☒ 3. निगलने
 - ☒ 4. चबाने



Download SSC CGL, CHSL E-BOOKS

[CLICK HERE](#)

- ✓ 2. कान का कच्चा होना
- ✗ 3. अत्यधिक गुणी होना
- ✗ 4. अत्यधिक विश्वास पात्र न होना

Comprehension:

प्रश्न संख्या 26 से 30 तक के उत्तर दिए गए गद्यांश के आधार पर दीजिए।
राष्ट्रीय एवं अंतरराष्ट्रीय स्तर पर _____ (26) महिलाओं के समक्ष भारत में बल्कि यह कहे कि सम्पूर्ण विश्व में एक समस्या सर्वाधिक _____ (27) है और वह यह कि इन महिलाओं को यौन-उत्पीड़न का भी शिकार होना पड़ता है। पूर्व में केवल फिल्म-जगत से जुड़े महिला कलाकारों के सम्बंध में ऐसी बातें उठती थीं, जबकि वर्तमान में _____ (28) के हर क्षेत्र में यह समस्या उत्पन्न होने लगी है। _____ (29) लोगों द्वारा तो उन्हें सताया जाता ही था, अब तथाकथित शिक्षितों द्वारा भी उन्हें सताया जा रहा है। पंजाब के पूर्व पुलिस महानिदेशक और भारतीय हॉकी संघ के अध्यक्ष कैंवरपाल सिंह गिल और भारतीय प्रशासनिक सेवा की _____ (30) श्रीमती बजाज के बीच विवाद को लेकर न्यायालय में जो मामला उठाया गया था वह यौन-उत्पीड़न का ही मामला था।

SubQuestion No : 16

Q.16 गद्यांश के रिक्त स्थान की पूर्ति दिए गए विकल्पों में से उचित विकल्प से कीजिए-(26)

- Ans
- ✓ 1. कामकाजी
- ✗ 2. अकेली
- ✗ 3. वृद्ध
- ✗ 4. घरेलू

Comprehension:

प्रश्न संख्या 26 से 30 तक के उत्तर दिए गए गद्यांश के आधार पर दीजिए।
राष्ट्रीय एवं अंतरराष्ट्रीय स्तर पर _____ (26) महिलाओं के समक्ष भारत में बल्कि यह कहे कि सम्पूर्ण विश्व में एक समस्या सर्वाधिक _____ (27) है और वह यह कि इन महिलाओं को यौन-उत्पीड़न का भी शिकार होना पड़ता है। पूर्व में केवल फिल्म-जगत से जुड़े महिला कलाकारों के सम्बंध में ऐसी बातें उठती थीं, जबकि वर्तमान में _____ (28) के हर क्षेत्र में यह समस्या उत्पन्न होने लगी है। _____ (29) लोगों द्वारा तो उन्हें सताया जाता ही था, अब तथाकथित शिक्षितों द्वारा भी उन्हें सताया जा रहा है। पंजाब के पूर्व पुलिस महानिदेशक और भारतीय हॉकी संघ के अध्यक्ष कैंवरपाल सिंह गिल और भारतीय प्रशासनिक सेवा की _____ (30) श्रीमती बजाज के बीच विवाद को लेकर न्यायालय में जो मामला उठाया गया था वह यौन-उत्पीड़न का ही मामला था।

SubQuestion No : 17

Q.17 गद्यांश के रिक्त स्थान की पूर्ति दिए गए विकल्पों में से उचित विकल्प से कीजिए—(27)

- Ans
- ✗ 1. विशेष
- ✓ 2. जटिल
- ✗ 3. सहज
- ✗ 4. सामान्य

Comprehension:

प्रश्न संख्या 26 से 30 तक के उत्तर दिए गए गद्यांश के आधार पर दीजिए।
राष्ट्रीय एवं अंतरराष्ट्रीय स्तर पर _____ (26) महिलाओं के समक्ष भारत में बल्कि यह कहे कि सम्पूर्ण विश्व में एक समस्या सर्वाधिक _____ (27) है और वह यह कि इन महिलाओं को यौन-उत्पीड़न का भी शिकार होना पड़ता है। पूर्व में केवल फिल्म-जगत से जुड़े महिला कलाकारों के सम्बंध में ऐसी बातें उठती थीं, जबकि वर्तमान में _____ (28) के हर क्षेत्र में यह समस्या उत्पन्न होने लगी है। _____ (29) लोगों द्वारा तो उन्हें सताया जाता ही था, अब तथाकथित शिक्षितों द्वारा भी उन्हें सताया जा रहा है। पंजाब के पूर्व पुलिस महानिदेशक और भारतीय हॉकी संघ के अध्यक्ष कैंवरपाल सिंह गिल और भारतीय प्रशासनिक सेवा की _____ (30) श्रीमती बजाज के बीच विवाद को लेकर न्यायालय में जो मामला उठाया गया था वह यौन-उत्पीड़न का ही मामला था।

SubQuestion No : 18

Q.18 गद्यांश के रिक्त स्थान की पूर्ति दिए गए विकल्पों में से उचित विकल्प से कीजिए-(28)

- Ans
- ✗ 1. संस्कृति
- ✓ 2. समाज
- ✗ 3. विश्व
- ✗ 4. शहर

Comprehension:

प्रश्न संख्या 26 से 30 तक के उत्तर दिए गए गद्यांश के आधार पर दीजिए।
राष्ट्रीय एवं अंतरराष्ट्रीय स्तर पर _____ (26) महिलाओं के समक्ष भारत में बल्कि यह कहे कि सम्पूर्ण विश्व में एक समस्या सर्वाधिक _____ (27) है और वह यह कि इन महिलाओं को यौन-उत्पीड़न का भी शिकार होना पड़ता है। पूर्व में केवल फिल्म-जगत से जुड़े महिला कलाकारों के सम्बंध में ऐसी बातें उठती थीं, जबकि वर्तमान में _____ (28) के हर क्षेत्र में यह समस्या उत्पन्न होने लगी है। _____ (29) लोगों द्वारा तो उन्हें सताया जाता ही था, अब तथाकथित शिक्षितों द्वारा भी उन्हें सताया जा रहा है। पंजाब के पूर्व पुलिस महानिदेशक और भारतीय हॉकी संघ के अध्यक्ष कँवरपाल सिंह गिल और भारतीय प्रशासनिक सेवा की _____ (30) श्रीमती बजाज के बीच विवाद को लेकर न्यायालय में जो मामला उठाया गया था वह यौन-उत्पीड़न का ही मामला था।

SubQuestion No : 19

Q.19 गद्यांश के रिक्त स्थान की पूर्ति दिए गए विकल्पों में से उचित विकल्प से कीजिए-(29)

- Ans
- ✗

1. गरीब

✗

2. गँवार

✗

3. बली

✓

4. अशिक्षित

Comprehension:

प्रश्न संख्या 26 से 30 तक के उत्तर दिए गए गद्यांश के आधार पर दीजिए।
राष्ट्रीय एवं अंतरराष्ट्रीय स्तर पर _____ (26) महिलाओं के समक्ष भारत में बल्कि यह कहे कि सम्पूर्ण विश्व में एक समस्या सर्वाधिक _____ (27) है और वह यह कि इन महिलाओं को यौन-उत्पीड़न का भी शिकार होना पड़ता है। पूर्व में केवल फिल्म-जगत से जुड़े महिला कलाकारों के सम्बंध में ऐसी बातें उठती थीं, जबकि वर्तमान में _____ (28) के हर क्षेत्र में यह समस्या उत्पन्न होने लगी है। _____ (29) लोगों द्वारा तो उन्हें सताया जाता ही था, अब तथाकथित शिक्षितों द्वारा भी उन्हें सताया जा रहा है। पंजाब के पूर्व पुलिस महानिदेशक और भारतीय हॉकी संघ के अध्यक्ष कँवरपाल सिंह गिल और भारतीय प्रशासनिक सेवा की _____ (30) श्रीमती बजाज के बीच विवाद को लेकर न्यायालय में जो मामला उठाया गया था वह यौन-उत्पीड़न का ही मामला था।

SubQuestion No : 20

Q.20 गद्यांश के रिक्त स्थान की पूर्ति दिए गए विकल्पों में से उचित विकल्प से कीजिए-(30)

- Ans
- ✓

1. पदाधिकारी

✗

2. नौकर

✗

3. सहयोगी

✗

4. कर्मचारी