

Section : **General Intelligence**

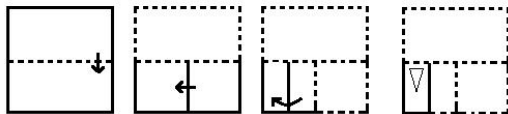
Q.1 Select the option that is related to the fourth number in the same way as the first number is related to the second number and the fifth number is related to the sixth number.

11 : 242 :: ? : 162 :: 14 : 392

- Ans
- 1. 12
 - 2. 10
 - 3. 8
 - 4. 9

Question ID : 6549788371
 Status : Answered
 Chosen Option : 4

Q.2 The sequence of folding a piece of paper and the manner in which the folded paper has been cut is shown in the following figures. How would this paper look when unfolded?

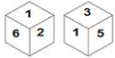


Ans

- 1.
- 2.
- 3.
- 4.

Question ID : 6549787583
 Status : Answered
 Chosen Option : 4

Q.3 Two different positions of the same dice are shown, the six faces of which are numbered from 1 to 6. Select the number that will be on the face opposite to the one having '4'.



- Ans**
- 1. 2
 - 2. 3
 - 3. 5
 - 4. 1

Question ID : 6549788387
Status : Answered
Chosen Option : 4

Q.4 Select the word-pair in which the two words are related in the same way as are the two words in the following word-pair.

Courage : Bravery

- Ans**
- 1. Afraid : Lazy
 - 2. Patience : Violent
 - 3. Systematic : Orderly
 - 4. Aggressive : Fragile

Question ID : 6549788383
Status : Answered
Chosen Option : 3

Q.5 How many triangles are there in the figure given below?



- Ans**
- 1. 9
 - 2. 8
 - 3. 10
 - 4. 11

Question ID : 6549788389
Status : Answered
Chosen Option : 1

Q.6 Select the option that is related to the third term in the same way as the second term is related to the first term.

TANGLE : XERKPI :: FIGHTS : ?

- Ans
- 1. JMKLXW
 - 2. JNOLXW
 - 3. JMKMXX
 - 4. KMKLYW

Question ID : 6549787571
Status : Answered
Chosen Option : 1

Q.7 Select the combination of letters that when sequentially placed in the blanks of the given series will complete the series.

H _ Z _ HOZCHO _ D _ O _ EH _ ZF

- Ans
- 1. HBZHHO
 - 2. OBHOZO
 - 3. OBZHZO
 - 4. OCZHZH

Question ID : 6549787573
Status : Answered
Chosen Option : 2

Q.8 Select the correct combination of mathematical signs that can sequentially replace the * signs and balance the given equation.

100 * 25 * 35 * 15 * 5 * 190

- Ans
- 1. -, +, ÷, ×, =
 - 2. +, -, ÷, ×, =
 - 3. ×, -, +, ÷, =
 - 4. -, +, ×, ÷, =

Question ID : 6549787562
Status : Answered
Chosen Option : 4


Q.9 A family consists of six members. Surendar is the son of Revant. Pranavi is the wife of Revant. Yugal is the brother of Revant. Kundana is the daughter of Pranavi. Janardan is the brother of Pranavi. How many children does Pranavi have?

- Ans
- 1. 2
 - 2. 1
 - 3. 3
 - 4. 4

Question ID : 6549786766
Status : Answered
Chosen Option : 1

Q.10 Select the correct mirror image of the given combination when the mirror is placed at MN as shown.

R w b 5 1 9



Ans

- 1.
- 2.
- 3.
- 4.

Question ID : 6549787584

Status : Answered

Chosen Option : 1

Q.11 Read the given statements and conclusions carefully. Assuming that the information given in the statements is true, even if it appears to be at variance with commonly known facts, decide which of the given conclusions logically follow(s) from the statements.

Statements:

Some drivers are artists.

All fathers are artists.

No father is a doctor.

Conclusions:

I. No doctor is an artist.

II. No driver is a doctor.

III. Some artists are fathers.

Ans

- 1. Both conclusions I and III follow
- 2. Only conclusion III follows
- 3. Only conclusion II follows
- 4. Both conclusions I and II follow

Question ID : 6549787578

Status : Answered

Chosen Option : 2

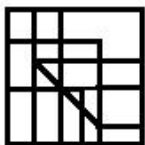


Q.12 Select the option in which the given figure is embedded (rotation is NOT allowed).



Ans

1.



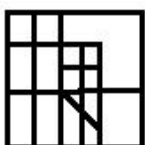
2.



3.



4.



Question ID : 6549787582
Status : Answered
Chosen Option : 3

Q.13 Select the number from among the given options that can replace the question mark (?) in the following series.

52, ?, 113, 162, 226, 307

Ans 1. 70

2. 83

3. 77

4. 89

Question ID : 6549787566
Status : Answered
Chosen Option : 3

Q.14 Three of the following four letter-cluster pairs are alike in a certain way and one is different. Select the odd one.

Ans 1. TAP : VDT

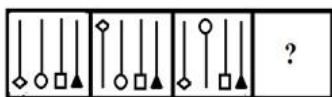
2. RAT : TDX

3. FRY : HTB

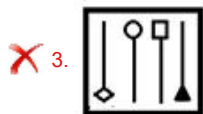
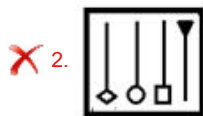
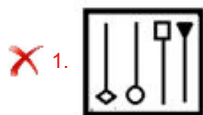
4. DRY : FUC

Question ID : 6549788384
Status : Not Answered
Chosen Option : --

Q.15 Select the figure that will replace the question mark (?) in the following figure series.



Ans



Question ID : 6549788388

Status : Answered

Chosen Option : 4

Q.16 Select the option in which the numbers in the set share the same relationship as the numbers in the given set.

(25, 19, 36)

Ans ✓ 1. (22, 17, 25)

✗ 2. (27, 11, 38)

✗ 3. (24, 22, 49)

✗ 4. (20, 14, 66)

Question ID : 6549788373

Status : Not Answered

Chosen Option : --

Q.17 In a group of 72 workers, each worker participates in one or more of three activities, i.e. Quiz, Mono-acting and Mimicry. 11 workers participate in Quiz only, 15 participate in Mono-acting only and 14 participate in Mimicry only. If 5 workers participate in all three activities, then how many workers participate in any two activities?

Ans ✓ 1. 27

✗ 2. 15

✗ 3. 25

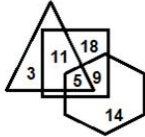
✗ 4. 37

Question ID : 6549788369

Status : Not Answered

Chosen Option : --

Q.18 In the Venn diagram given below, if 'Hexagon' represents 'Farmers', 'Triangle' represents 'Villagers' and 'Square' represents 'Beneficiaries', then how many Farmers are there who are Villagers and Beneficiaries also?



- Ans
- 1. 9
 - 2. 5
 - 3. 11
 - 4. 18

Question ID : 6549788393
Status : Answered
Chosen Option : 2

Q.19 In a certain code language, 'MODERATE' is written as 'OQFTBVF' and 'LIFE' is written as 'NJGF'. How will 'CLEAR' be written in that language?

- Ans
- 1. DNGBU
 - 2. ENFBT
 - 3. DNFBT
 - 4. DOFCT

Question ID : 6549787569
Status : Answered
Chosen Option : 2

Q.20 In a code language, if LOCK is written as 1212311 and KEY is written as 112225, then how will DEAR be written in the same language?

- Ans
- 1. 4220218
 - 2. 4052619
 - 3. 4232609
 - 4. 4222618

Question ID : 6549788378
Status : Answered
Chosen Option : 4

Q.21 Four words have been given, out of which three are alike in some manner and one is different. Select the word that is different.

- Ans
- 1. Ophthalmologist
 - 2. Psychiatrist
 - 3. Cardiologist
 - 4. Gastroenterologist

Question ID : 6549787577
Status : Answered
Chosen Option : 2

Q.22 Four number-pairs have been given, out of which three are alike in some manner and one is different. Select the one that is different.

- Ans 1. 8 : 516
 2. 5 : 130
 3. 9 : 734
 4. 7 : 348

Question ID : 6549788375
Status : Answered
Chosen Option : 1

Q.23 Select the option that is related to the third word in the same way as the second word is related to the first word.

Kick : Football :: Backstroke : ?

- Ans 1. Weight lifting
 2. Swimming
 3. Cricket
 4. Polo

Question ID : 6549787572
Status : Answered
Chosen Option : 2

Q.24 Select the option that represents the correct order of the given words as they would appear in an English dictionary.

1. Primary
2. Pristine
3. Predator
4. Precaution
5. Preserve

- Ans 1. 4, 3, 5, 2, 1
 2. 4, 5, 3, 1, 2
 3. 3, 4, 5, 1, 2
 4. 4, 3, 5, 1, 2

Question ID : 6549788376
Status : Answered
Chosen Option : 4

Q.25 Select the option in which the numbers are related in the same way as are the numbers of the following set.

(21, 13, 17)

- Ans 1. (11, 21, 140)
 2. (25, 35, 38)
 3. (32, 46, 39)
 4. (22, 57, 81)

Question ID : 6549787564
Status : Not Answered
Chosen Option : --